

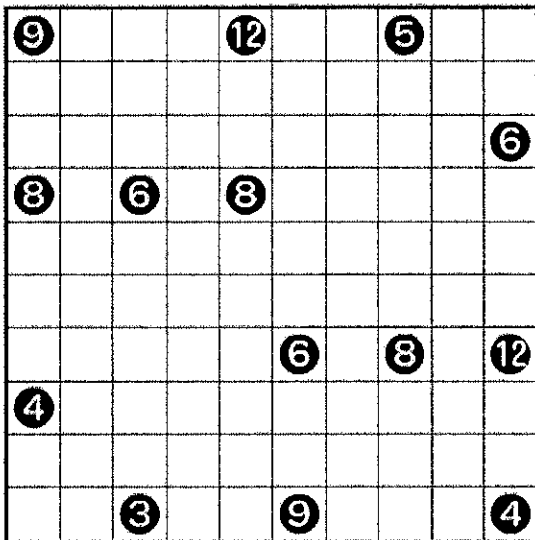
Shikaku

(Four Corners)

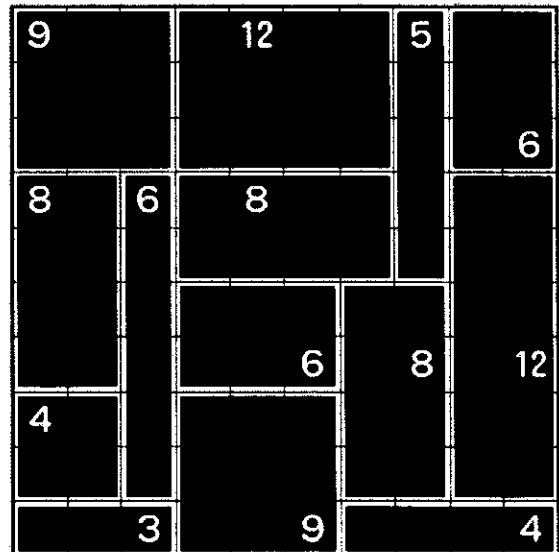
What are the rules of this game?

How do you win?

Unsolved



Solved



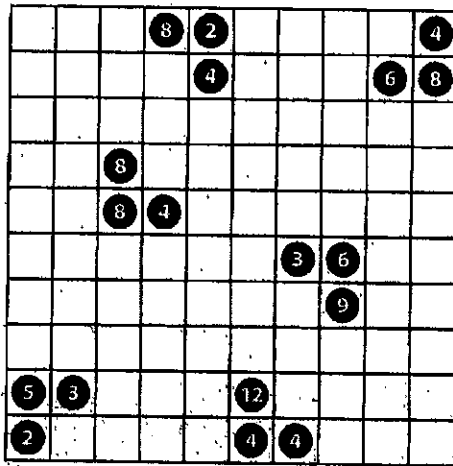
activity sheet 1

Name _____

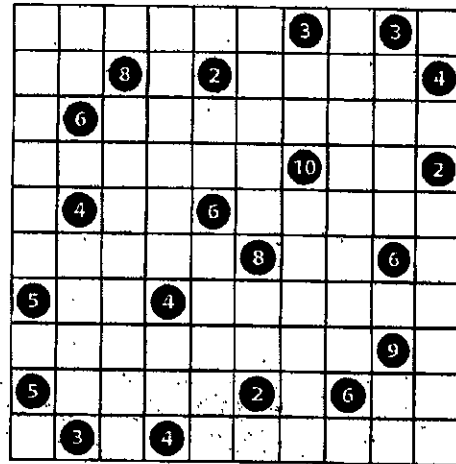
SHIKAKU

The rules:

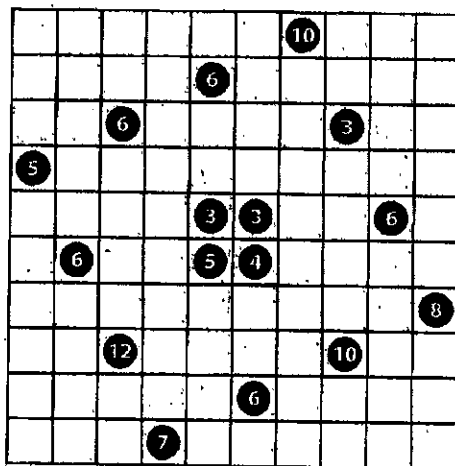
1. Each of the following Shikaku puzzles needs to be sectioned into rectangles (and squares) along the grid lines, so that the number in each rectangle refers to the area of that rectangle.
2. Only one number can appear in each rectangle.
3. Each square on the grid is used in exactly one rectangle (that is, no rectangles may overlap).



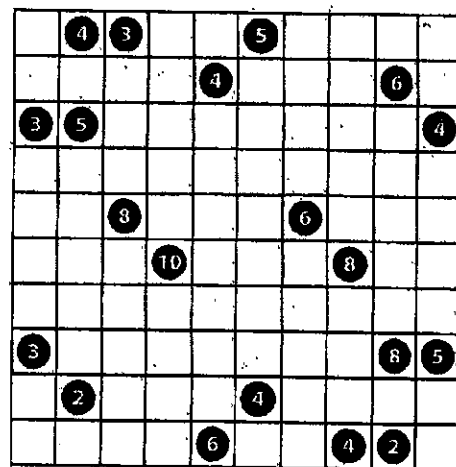
Puzzle 1



Puzzle 2



Puzzle 3



Puzzle 4

Grid Works

Grid Works interface showing a 3x3 grid and a puzzle-solving area.

Legend:

- Green: Triangle (▲), Circle (○), X (X)
- Blue: Triangle (▲), Circle (○), X (X)
- Yellow: Triangle (▲), Circle (○), X (X)
- White: Triangle (▲), Circle (○), X (X)
- Green: Square (■)
- Blue: Square (■)
- White: Square (■)
- Yellow: Square (■)

Grid:

POSITIVE CLUES:

- 1. 2x2 block: top-left (Blue Triangle), top-right (White), bottom-left (White), bottom-right (Yellow)
- 2. 2x2 block: top-left (White), top-right (White Triangle), bottom-left (Blue X), bottom-right (White)
- 3. 2x2 block: top-left (Yellow Circle), top-right (White X), bottom-left (White), bottom-right (White)
- 4. 2x2 block: top-left (Green), top-right (White Triangle), bottom-left (Green), bottom-right (Blue)

Solution 203 **204**

Restart

POSSIBLE CLUES

Solution 203

Restart

POSSIBLE CLUES

Solution 198

Restart

POSITVE CLUES

Solution 189

Restart

POSITVE CLUES

Solution 180

Restart

Restart

POSITIVE CLUES

1
 2
 3
 4
 5

NEGATIVE CLUES

6
 7

Solution

189

190

Restart

POSITIVE CLUES

1
 2
 3
 4

NEGATIVE CLUE

5

Solution

179

180

Yajilin

